

Daide Balliano



**FOUR CONSIDERATIONS ABOUT APOCALYPSE
FOR A BLACK GOAT AND THE LAST MAN**

The Artists Space
WHEN TIME BECOMES FORM

This project has been created site specifically thinking about the structure of the Artists Space, and following the timing and concept of the project: " WHEN THE TIME BECOMES FORM " created and curated by Marina Abramovic.

The main character of the performance is a man paralyzed, and forced on a wheelchair.
He is the last man alive.
The apocalypse is upcoming.

Tortured by his loneliness, the last man wander around for an empty planet, thinking about time and life.

The four spaces that divide the location of the performance have to be considered as a metaphor of the thoughts of the character.

In each situation the actions are divided by a static side and an active side.

The reality have always to be seen as the static part, and the action are the desire and thoughts of himself.

The performance doesn't have a narrative structure.

Is a loop without beginning or end, and could be seen also as a prolonged moment or as sleeping.

As in a dream, the spaces and the parts of the performance are near but different, part of the same thing but strongly divided.

The title of the scene that will have act in the different galleries of the space are suggestion and reading key: they could be imagined as titles of chapters of the same book.

In order to have a better idea of how the different parts are connected to each other see the FLOOR PLAN on page 13.

Gallery I

CONSIDERATION ABOUT TIME AND DEATH

In the center of the main space there will be a black structure, as a big black cube with a staircase on the front side.

The structure will be around two meters tall and there will be a man sitting on top.

The man will be entirely covered with long black hairs

He will make only tiny repetitive movements as during a meditation.

He will never stand or move from the structure.

On the floor of the space there is a second performer, sitting on a wheel chair.

He will have to face covered with a mask, reminding to the snout of a goat.

For the main part of the time he will just sit apathetic on the wheelchair in some angle of the room, facing a wall or facing the structure.

He will openly avoid the eye contact with the public.

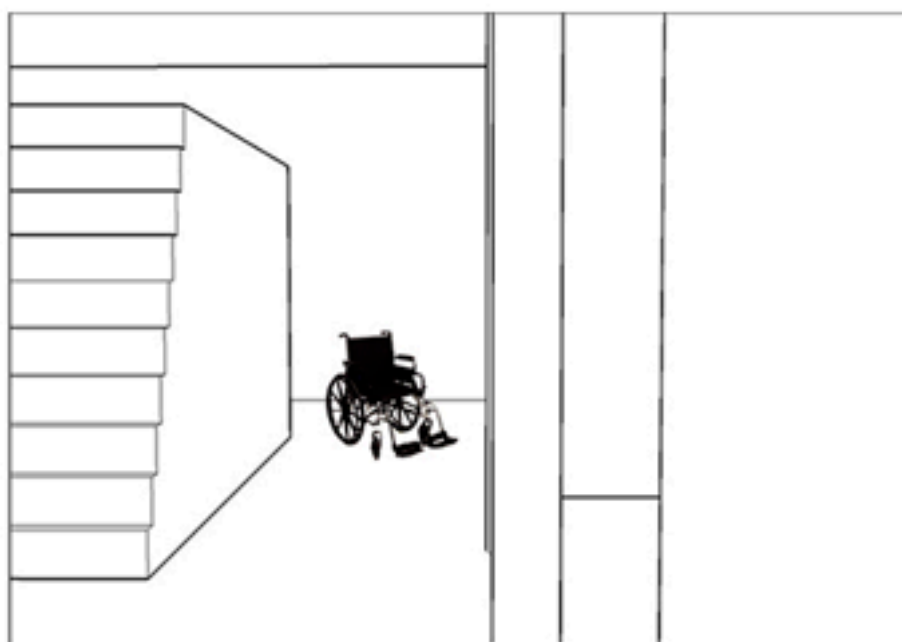
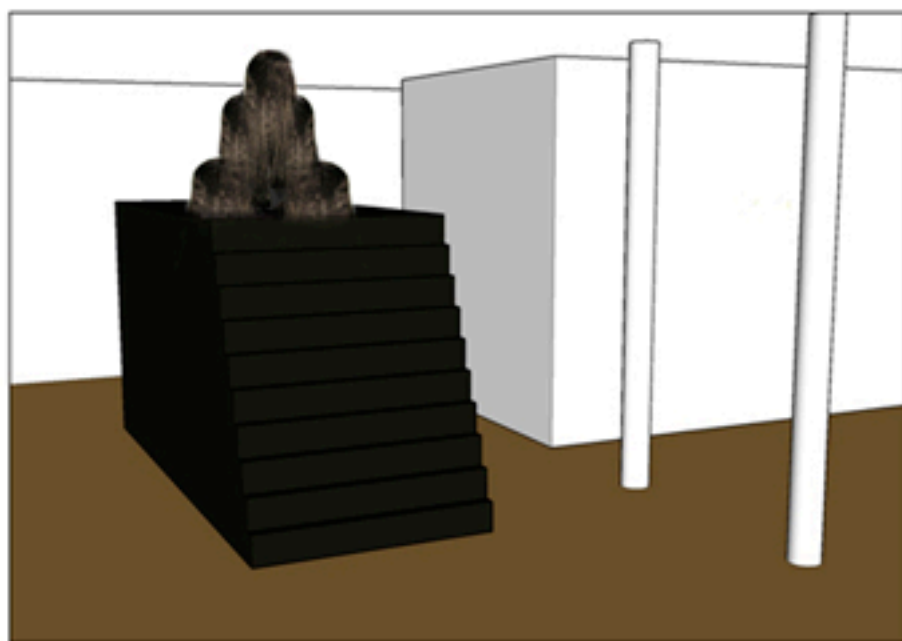
The room is dark: windows have to be obscured.

OPTIONAL: The room is filled with fog, through the use of a smoke machine.

Technical details:

The structure will be as much big as the budget will permit.

Should be tall at least as a man, and will have to be painted in glossy black or glossy white.



Gallery II

CONSIDERATIONS ABOUT RATIONALITY IN THE CAUSES AND EFFECTS OF LIFE

In the side room of the main space there will be a monitor on the floor, screening a black and white video.

The video is the re-edited version of a scientific experiment of the fifties, showing two white rats fighting each other under the influence of an electric impulse.

The audio is a endless sequence of morse code signals.

The room is dark: windows have to be obscured.

OPTIONAL: The room is filled with fog, trough the use of a smoke machine.

SEE STILL FRAMES ATTACHED

Technical details:

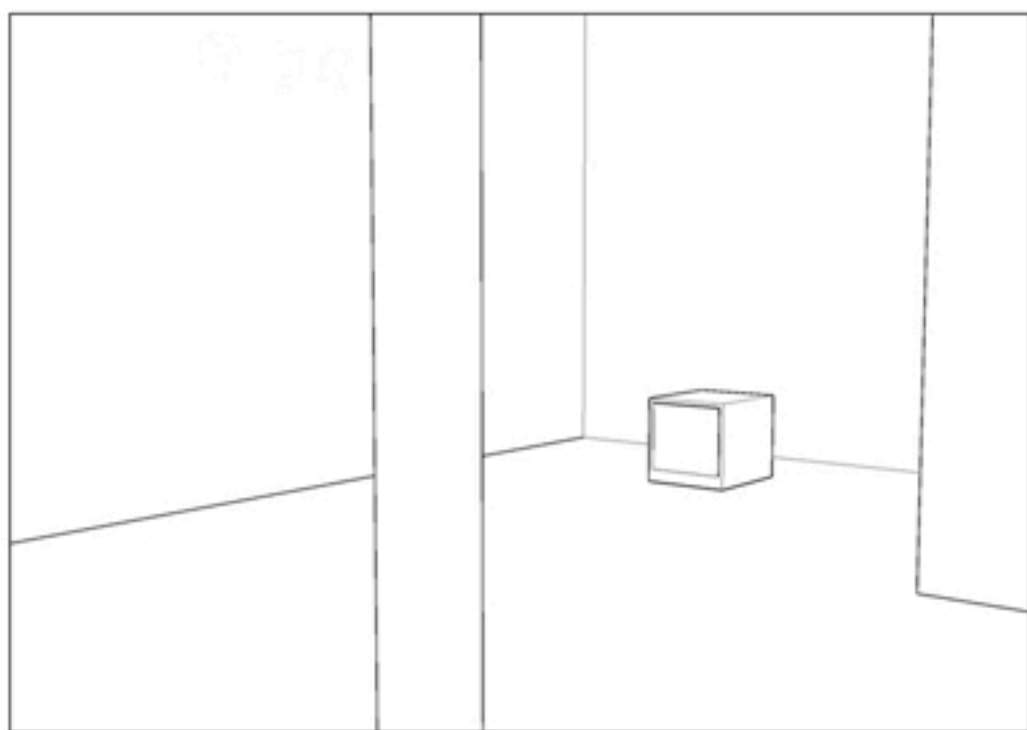
The monitor doesn't need to be a flat screen.

A normal Tv monitor could be perfect but would have to be insert, with the Dvd player, in a wood black box that leave visible only the image on the screen.

Another option is to use a projector.

In this case the projector have to be installed (also inside a box) at a distance necessary to produce a really small projection on the wall (not larger than 2 feet or 60 Cm)

The box with the monitor should be left on the floor or the room.



Gallery III

CONSIDERATIONS ABOUT LAZARUS & THE BLACK GOAT

On the walls of the second room there are twelve red rotating light (3 on each wall, or in line).
All the lights are working and are the only light source of the room.

The room is dark: windows have to be obscured.

OPTIONAL: The room is filled with fog, trough the use of a smoke machine.

In the four angles of the room there are speakers, playing the noise of hundreds of flies.

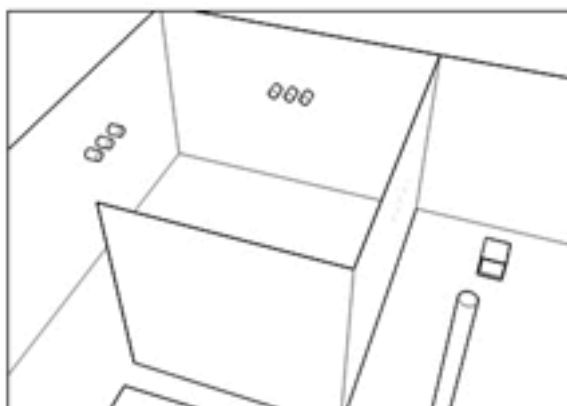
The performer will sit on his wheelchair in the middle or in a angle of the room.

Technical details:

The red rotating lights can be rent in any halloween supply shop.

This kind of lights are also sold in a shop in Canal St. at Greene St., already furnished with the necessary to install them on a wall, for \$ 16 each.

I have already four of them.



Gallery IV

CONSIDERATIONS AND REGRETS OF THE LAST MAN

In the center of the space there is a piano.

Behind the piano, there is a black cube with a big kitchen knife on top.

The performer will sit on his wheelchair near the cube and will spell the time as a clock, beating the cube with the knife: one beat each second.

At a certain moment a singer will arrive and will perform a little concert for voice and piano.

He will be dressed elegantly in black, as a classic piano player.

The singer would be Joseph Keckler (see link to YouTube below).

He will sing cover or original song specifically arranged for the Performance, on the concept of : " Considerations and regrets for the last Man "

The concert will have a variable duration and will be decided by the singer.

During the concert the performer on the wheelchair will stop to beat the cube and will listen the music, carrying the knife in his hands.

He will openly avoid the eye contact with the singer and with the audience.

The room will be dark, apart of a spot light on the piano.

OPTIONAL: The room is filled with fog, trough the use of a smoke machine.

Joseph Keckler **LINKS:**

http://youtube.com/watch?v=L_4GI-CVuO4

Technical details:

The cube can be build with wood and painted in glossy black as the piano.

In case of budget need I already have one (smaller than the necessary but could be adapted).

Esthetically I would prefer to use a real piano but, in case of budget needs, could be changed with a digital player.

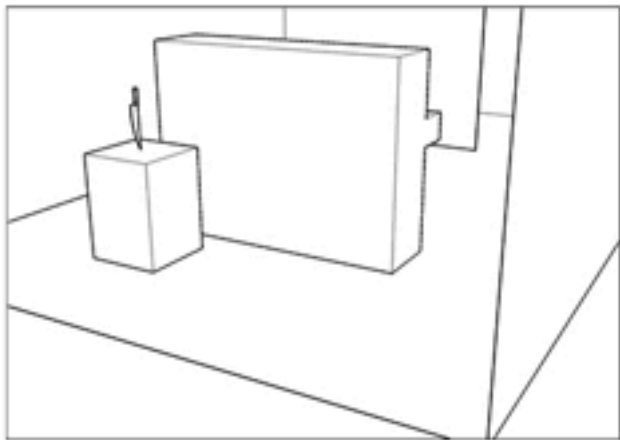
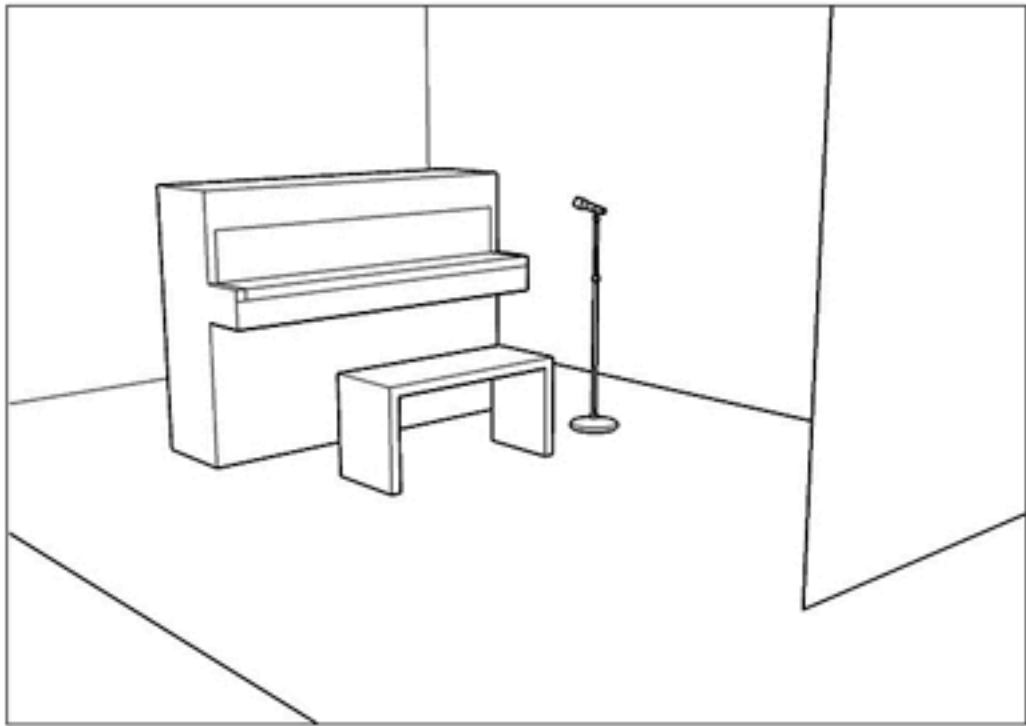
OPTION B:

In case of budget difficulties, or difficulties with the schedule of the singer, the piano and the singer performance can be substitute by a TV screen, playing a video that show a classic performance from Fred Astaire (example at this link):

<http://youtube.com/watch?v=-g3PDipYS5I&feature=related>

The audio will be modified and there will be no music.

The performer on the wheel chair will accompany the video with the noise of the knife on the cube.





FLOOR PLAN

